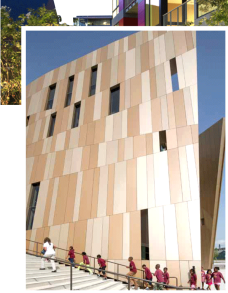


**SUSTAINABILITY IS NOT JUST A BUZZWORD FOR US. WE MEAN IT.**

**TRESPA**  
HIGH PRESSURE LAMINATES  
from NETHERLANDS

SUSTAINABILITY  
EDIT



Unicolour: Carmine Red, Cylan, Cobalt, Cactus Green

**Sustainability has always been at the heart of TRESPA.**

With TRESPA, we act to provide a win for the environment, our business, and our clients.

Between 2019 to 2021, TRESPA switched to 100% Renewable Electricity and installed more energy efficient machinery on-site in 2020.

However, a share of this decrease was due to the production volume decrease during the Covid-19 pandemic as well as some data improvement activities (5%).

## MINIMISING CO2 EMISSIONS

Our path toward carbon neutrality by 2030 includes a targeted reduction of 50% and a compensation of 40% of our emissions via carbon offsetting by 2026.

Metallix: Titanium Bronze



**EACH ACTION, YOUR REFLECTION, FOR YOUR FUTURE GENERATION.**

Unicolour: Deep Red Brown, Pure White

## MATERIALISING SUSTAINABILITY

**Material durability at the core of sustainability.**

Our main driver of sustainability is durability. The longer the product lasts, the longer the period of time to spread the environmental impact associated with the production of raw materials and the manufacturing process.



Lamerc: Athena White, Metropolis Black

By needing fewer replacements, long-lasting Trespa panels entail less use of resources, lower emissions of pollutants and a smaller amount of waste than short-lifespan goods.



**GREENGUARD GOLD CERTIFIED**

GreenGuard Gold Certificate ensures that TRESPA is acceptable for use in environment such as schools and healthcare facilities.



**FSC. FOREST STEWARDSHIP COUNCIL**

FSC certification ensures that TRESPA comes from well managed forests that provide environmental, social, and economic benefits.



Wood-decor: Loft Brown



Lamerc: Athena White



**LCA. LIFE CYCLE ASSESSMENT**

**DO BETTER.** Sustainability development leading to new business opportunities

**DO GOOD.** Help customers improve their sustainability position

**DO NO HARM.** Minimize the environmental impact and comply with the regulations

Through the LCA methodology, TRESPA measures three key environmental indicators: water footprint, global warming and primary energy demand.

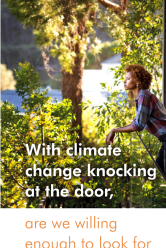


Lamerc: Persian Copper



**PEFC. PROGRAMME FOR THE ENDORSEMENT OF FOREST CERTIFICATION**

Dedicated to promoting sustainable forest management, the PEFC Certification is the certification system of choice for small forest owners. Trespa products contain up to 70% of natural fibres, most of which originate from managed forests which are recognised by PEFC.



**With climate change knocking at the door,**

**are we willing enough to look for ways to reduce carbon emission when building or renovating new homes?**



401, Rashupati Akshat Heights, D-91, Madho Singh Road, Bari Park Jaipur- 302016, Rajasthan, India

dnyam.goel@vibrant-technik.com | +91-98188 06094 | www.vibrant-technik.com



Scan QR Code to visit our website

Unique in-house EBC (Electron Beam Curing) Technology guarantees outstanding appearance for many years.

Panels are exposed to extreme Florida climate to simulate difficult conditions on ground.

Panels endure 3000 hours of artificial aging which is comparable to 10 years of real-time weathering.

Wood-decor: Italian Walnut