

INSTILLING *life* IN MONOCHROMES

Cities never stand still. Every hour they look different, following their natural rhythm of days and nights as well as the course of the seasons.

As the city grows, new houses, hotels, office buildings and schools arise, others are amplified or renovated to fit the needs of the future.

HIGH PRESSURE LAMINATES

from NETHERLANDS

A perfect building with great appearance lasts for many years without requiring frequent maintenance or refurbishment. Unlike other materials, TRESPA offers excellent outdoor colour stability and high product performance with low maintenance.

Applied in combination with ventilated façade technology, it delivers an improved building life cycle, allowing the total cost of ownership to remain low while maintaining the high value and uninterrupted use of the building.

THE POWER *of* GREYS

The striking impact of grey notes in an exterior is well known and a lasting favorite with architects the world over. They also have a tactile matt surface with a grained effect that perfectly mimics the source pattern of the original. And, because the Greys finish are designed to complement the total vision of the architect, they seamlessly blend with other façade elements like doors and windows.

FOCUS RANGE

Energy Efficiency Under Low Budget

Trespa facades prove that passive design and energy efficiency are not a luxury and do not mean a more expensive construction, refuting the myth that large investments are needed to achieve high energy efficiency.

Complete Concealed Fixing

Completely rivets and silicon free. However, rivet fixing option is available where low cost of installation is of prime concern.

A city is not a static place but a source of inspiration, surprises and experiences.



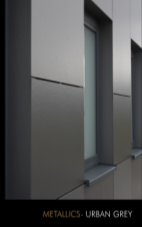
UNI COLOURS- PASTEL GREY, SILVER GREY, QUARTZ GREY, STEEL GREY, ANTHRACITE GREY, LONDON GREY



LUMEN- NEWYORK GREY



WOOD DECOR- MYSTIC CEDAR



METALLICS- URBAN GREY

Sizes



2550 x 1860 mm (~100 x 73 inch)
3050 x 1530 mm (~120 x 60 inch)
3650 x 1860 mm (~143 x 73 inch)
4270 x 2130 mm (~168 x 83 inch)*

Note: Variation of four different sizes reduces wastage of material, leading to effectively less price for the client.

Thickness



8 mm (~ 5/16 inch)
10 mm (~ 3/8 inch)
13 mm (~ 1/2 inch)

Note: 10 mm and 13 mm are the most preferred thicknesses for perforations.

Finishes



WOOD DECOR- HESBANIA

WE GO *beyond* WHAT IS MINIMUM REQUIRED.

Unique In-house Technology

Electron Beam Curing technology guarantees outstanding appearance for many years.

Testing As Per Florida Cycle

The panels endure 3000 hours of artificial aging comparable to 10 years of real-time weathering, achieved by exposing the panels to extreme Florida climate.

Unbeatable Colour Stability

Neither sun, rain (plus acid rain), snow or moisture has any significant effect on surface making the panel virtually maintenance free.

Sustainability: Trespa Second Life

Trespa Second Life Program has been introduced to encourage the reuse of its panels as material for other applications. Reusing a product means extending its lifetime and reducing its environmental impact further by avoiding resource and energy use.

BRING YOUR *dream project*
TO LIFE WITH US.



We provide a complete end to end solution- from designing to rendering to material supply to execution when designing interiors and facades. Our high- quality renderers and animations will help you get the feel of the space beforehand.

401, Pashupati Akshat Heights, D-91
Modho Singh Road, Bani Park, Jaipur- 302016
Rajasthan, India

sanjay.goel@vibrant-technik.com
+91-141-2209655

www.vibrant-technik.com